



**TTN<sup>®</sup> BEARINGS**

**關節軸承 Oscillation Bearing**



**永興軸承·安心運轉**

[www.TTN-BEARING.com](http://www.TTN-BEARING.com)

## 公司簡介

## Company Brief

TTN 永興軸承有限公司成立於1976年，台灣專業的軸承製造商。永興軸承成立 40 多年以來一直致力於提供卓越的品質、技術創新、精密檢測、解決方案與一條龍客製化服務，在行業中贏得眾多客戶的信賴和讚譽。持續開發了多種新型軸承，致力創新技術精進與多元化發展，更憑藉著在精密加工方面的技術優勢，不斷開發精密機械元件、車類零部件等高精密產品。

TTN 自有實驗室的可靠性測試，為了提供更全面性服務，及擴展產品應用於更廣大的產業面，永興軸承投入了大量資源，建置自有實驗室，除了能夠提供客製化產品和解決方案外，詳盡的測試也確保了新產品在設計上安全性的要求，為客戶創造創新價值提供卓越的品質與安全可靠的完善服務。實驗室除了標準的材料分析、設計驗證與工況模擬 (高低溫度/鹽霧/壓力/震動) 外，也特別針對了不同的軸承生產參數調整，如：注脂量、游隙、密封測試、曲率進行差異性與壽命分析。而新式材料如陶瓷(SiC/Si3N4)、工程塑料 (PEEK/Torlon)，近年在軸承上的應用也越來越普遍，需要更專業且精密檢測設備，更通過ISO9001 和 IATF16949 品質認證，確保產品質量符合國際 RoHS、Reach、CPSIA 等標準。

軸承是作為機械設備中的重要零部件，在應用在各行業，是非常關鍵的核心零部件，如電機設備、風扇、醫療輔具、汽機車、自行車、滑板、運動器材、無人機、各種工具機、電梯、辦公家具、各式輪子等，都需要軸承帶動運轉。

TTN 永興軸承提供極佳性價比與技術支援，擴展應用於各大產業，更提供客製化產品和解決方案，為客戶創造創新價值服務，完美軸承的應用，帶動全球運轉，聚焦國際，與世界接軌。

## 關節軸承

## Oscillation Bearing

關節軸承是由一種球面滑動軸承，其滑動接觸是由一個內球面的內圈和一個外球面的外圈組合而成的軸承結構，作動時可以在任意角度旋轉擺動。

一般種類可區分為：杆端關節軸承，向心關節軸承，液壓油缸關節軸承等。其表面通常採用磷化、軋口、鑲墊、噴塗等多種特殊工藝處理方法製作而成，具有載荷能力大，抗衝擊，抗腐蝕、耐磨損、自調心、潤滑等諸多優點，廣泛應用於工程液壓油缸、鍛壓機床、工程機械、自動化設備、汽車減震器、水利機械等行業，主要解決一些速度較低的擺動運動、傾斜運動和旋轉運動。

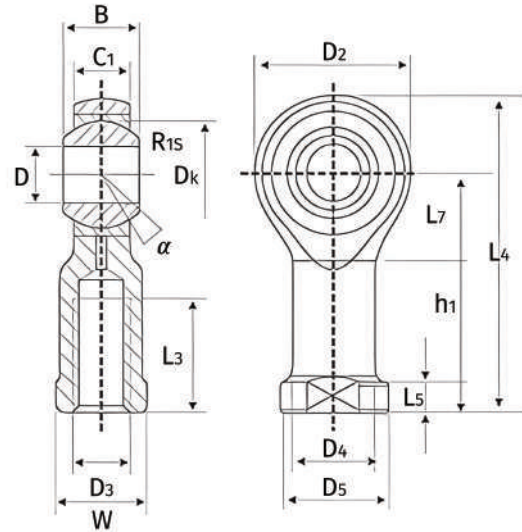
※ 通過 ISO 和 IATF16949，產品質量符合 RoHS、Reach、CPSIA 標準，更榮獲匠心品質金獎。

更多的產品資訊請來電或來信洽詢，謝謝。

# 桿端關節軸承

# Ball Joint Rod Ends Series

\* SI...T/K



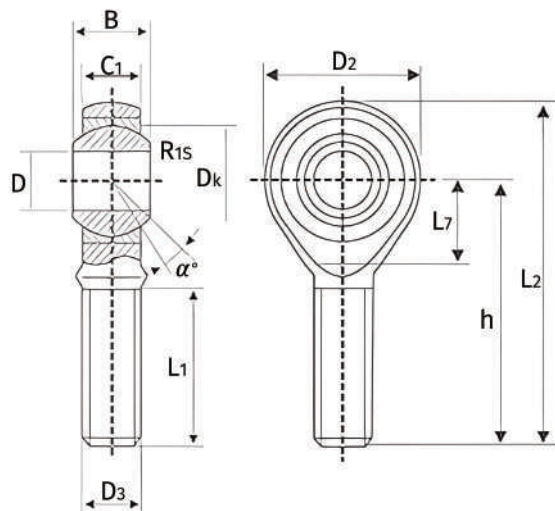
型號 Bearing No.	外形尺寸 Boundary dimensions															基本額定負荷 Basic load ratings	
	d	d3	B	C1	W	h1	d2	L4	L5	d4	d5	dk	L3 min	a≈	R1Smin	動負荷 dyn.c.(KN)	靜負荷 stat.c.(KN)
	mm																
SI5T/K	5	M5*0.8	8	6	9	27	18	36	4	8.5	11	11.11	10	13	0.3	5.7	6
SI6T/K	6	M6*1	9	6.75	11	30	20	40	5	10	13	12.7	12	13	0.3	7.2	7.65
SI8T/K	8	M8*1.25	12	9	14	36	24	48	5	12.5	16	15.875	16	14	0.3	11.6	12.9
SI10T/K	10	M10*1.5	14	10.5	17	43	28	57	6.5	15	19	19.05	20	13	0.3	14.5	18
SI10T/K-1	10	M10*1.25	14	10.5	17	43	28	57	6.5	15	19	19.05	20	13	0.3	14.5	18
SI12T/K	12	M12*1.75	16	12	19	50	32	66	6.5	17.5	22	22.225	22	13	0.3	17	24
SI12T/K-1	12	M12*1.25	16	12	19	50	32	66	6.5	17.5	22	22.225	22	13	0.3	17	24
SI14T/K	14	M14*2	19	13.5	22	57	36	75	8	20	25	25.4	25	16	0.3	24	31
SI14T/K-1	14	M14*1.5	19	13.5	22	57	36	75	8	20	25	25.4	25	16	0.3	24	31
SI16T/K	16	M16*2	21	15	24	64	42	85	8	22	27	28.575	28	15	0.3	28.5	39
SI16T/K-1	16	M16*1.5	21	15	24	64	42	85	8	22	27	28.575	28	15	0.3	28.5	39
SI18T/K	18	M18*1.5	23	16.5	27	71	44	93	10	25	31	31.75	32	15	0.3	42.5	47.5
SI20T/K	20	M20*1.5	25	18	30	77	50	102	10	27.5	34	34.925	33	14	0.3	42.5	57
SI22T/K	22	M22*1.5	28	20	32	84	54	111	12	30	37	38.1	37	15	0.3	57	68
SI25T/K	25	M24*2	31	22	36	94	60	124	12	33.5	42	42.85	42	15	0.3	68	85
SI28T/K	28	M27*2	35	24	41	103	66	136	14	37	46	47.6	51	15	0.3	86	107
SI30T/K	30	M30*2	37	25	41	110	70	145	15	40	50	50.8	51	17	0.3	88	114
SI30T/K-1	30	M27*2	37	25	41	110	70	145	15	40	50	50.8	51	17	0.3	88	114
SI35T/K	35	M36*2	43	28	50	125	81	165.5	17	46	58	57.1	56	16	0.3	101	206
SI40T/K	40	M42*2	49	33	55	142	91	187.5	19	53	65	66.6	60	17	0.3	124	280
SI50T/K	50	M48*2	60	45	65	160	117	218.5	23	65	75	82.5	65	12	0.3	308	485



# 桿端關節軸承

# Ball Joint Rod Ends Series

\* SA...T/K



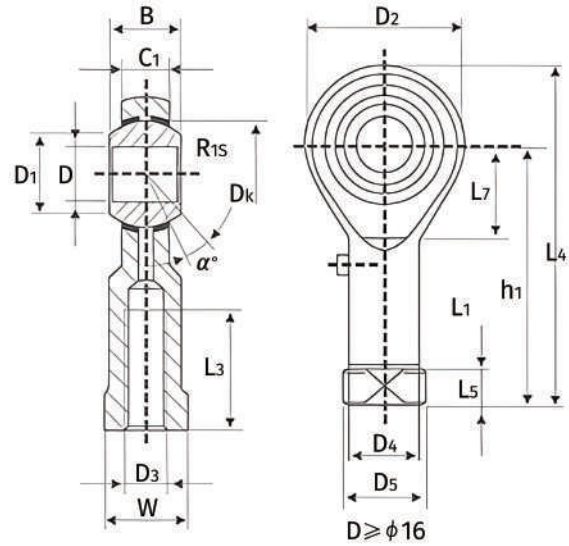
型號 Bearing No.	外形尺寸											基本額定負荷		
	Boundary dimensions											Basic load ratings		
	d	d3	B	C1	L1 min	d2	L7	h	L2	dk	R1Smin	a≈	動負荷 dyn.c(KN)	靜負荷 stat.c(KN)
SA5T/K	5	M5*0.8	8	6	19	18		33	42	11.11	0.3	13	5.7	6
SA6T/K	6	M6*1	9	6.75	21	20		36	46	12.7	0.3	13	7.2	7.65
SA8T/K	8	M8*1.25	12	9	25	24		42	54	15.875	0.3	14	11.6	12.9
SA10T/K	10	M10*1.5	14	10.5	28	28		48	62	19.05	0.3	13	14.5	18
SA12T/K	12	M12*1.75	16	12	32	32		54	70	22.225	0.3	13	17	24
SA14T/K	14	M14*2	19	13.5	36	36	18	60	78	25.4	0.3	16	24	31
SA16T/K	16	M16*2	21	15	37	40	21	66	87	28.575	0.3	15	28.5	39
SA18T/K	18	M18*1.5	23	16.5	41	44	22	72	90	31.75	0.3	15	42.5	47.5
SA20T/K	20	M20*1.5	25	18	45	50	25	78	103	34.925	0.3	14	42.5	57
SA22T/K	22	M22*1.5	28	20	48	54	27	84	111	38.1	0.3	15	57	68
SA25T/K	25	M24*2	31	22	55	60	30	94	124	42.85	0.3	15	68	85
SA28T/K	28	M27*2	35	24	62	66	33	103	136	47.6	0.3	15	86	107
SA30T/K	30	M30*2	37	25	66	70	35	110	145	50.8	0.3	17	88	114
SA35T/K	35	M36*2	43	28	85	81	41	140	180.5	57.1	0.3	16	101	206
SA40T/K	40	M42*2	49	33	90	91	46	150	195.5	66.6	0.3	17	124	280
SA50T/K	50	M48*2	60	45	105	117	59	185	243.5	82.5	0.3	12	308	485



# 桿端關節軸承

# Ball Joint Rod Ends Series

\* PHS



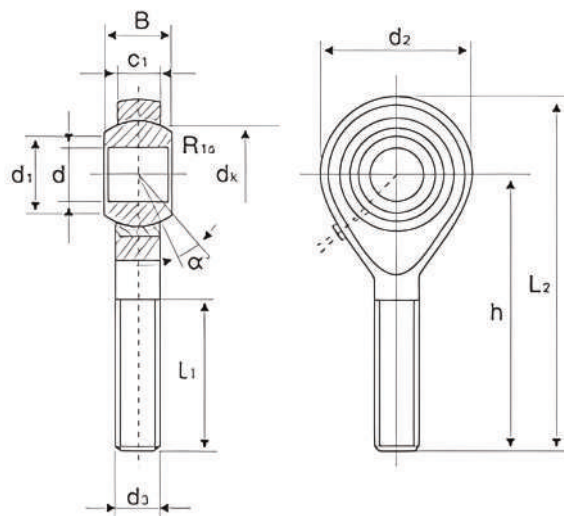
型號 Bearing No.	外形尺寸 Boundary dimensions																	基本額定負荷 Basic load ratings	
	d	d3	B	C1	W	L3 min	d2	L4	h1	L5	d4	d5	dk	d1	R1Smin	a≈	動負荷 dyn.c(KN)	靜負荷 stat.c(KN)	
	mm																		
PHS5	5	M5*0.8	8	6	9	10	16	35	27	4	8.5	11	11.11	7.7	0.3	13	3.25	5.7	
PHS6	6	M6*1	9	6.75	11	12	18	39	30	5	10	13	12.7	8.96	0.3	13	4.3	7.2	
PHS8	8	M8*1.25	12	9	14	16	22	47	36	5	12.5	16	15.875	10.4	0.3	14	7.2	11.6	
PHS10	10	M10*1.5	14	10.5	17	20	26	56	43	6.5	15	19	19.05	12.9	0.3	13	10	14.5	
PHS10-1	10	M10*1.25	14	10.5	17	20	26	56	43	6.5	15	19	19.05	12.9	0.3	13	10	14.5	
PHS12	12	M12*1.75	16	12	19	22	30	65	50	6.5	17.5	22	22.225	15.4	0.3	13	13.4	17	
PHS12-1	12	M12*1.25	16	12	19	22	30	65	50	6.5	17.5	22	22.225	15.4	0.3	13	13	17	
PHS14	14	M14*2	19	13.5	22	25	34	74	57	8	20	25	25.4	16.9	0.3	16	17	24	
PHS14-1	14	M14*1.5	19	13.5	22	25	34	74	57	8	20	25	25.4	16.9	0.3	16	17	24	
PHS16	16	M16*2	21	15	24	28	40	84	64	8	22	27	28.575	19.4	0.3	15	21.6	28.5	
PHS16-1	16	M16*1.5	21	15	24	28	40	84	64	8	22	27	28.575	19.4	0.3	15	21.6	28.5	
PHS18	18	M18*1.5	23	16.5	27	32	44	93	71	10	25	31	31.75	21.9	0.3	15	26	42.5	
PHS20	20	M20*1.5	25	18	30	33	50	102	77	10	27.5	34	34.925	24.4	0.3	14	31.5	42.5	
PHS22	22	M22*1.5	28	20	32	37	54	111	84	12	30	38	38.1	25.8	0.3	15	38	57	
PHS25	25	M24*2	31	22	36	42	60	124	94	12	33.5	42	42.85	29.6	0.3	15	47.5	68	
PHS28	28	M27*2	35	24	41	48	66	136	103	14	37	46	47.6	32.3	0.3	15	58	75	
PHS30	30	M30*2	37	25	41	51	70	145	110	15	40	50	50.8	34.8	0.3	17	64	88	
PHS30-1	30	M27*2	37	25	41	51	70	145	110	15	40	50	50.8	34.8	0.3	17	64	88	



# 桿端關節軸承

# Ball Joint Rod Ends Series

\* POS



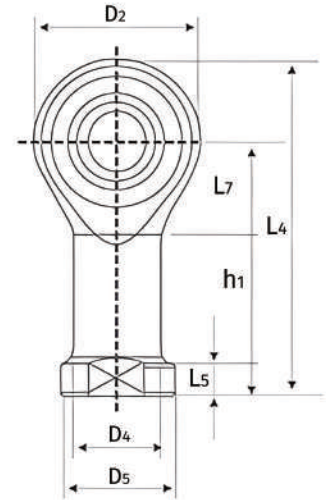
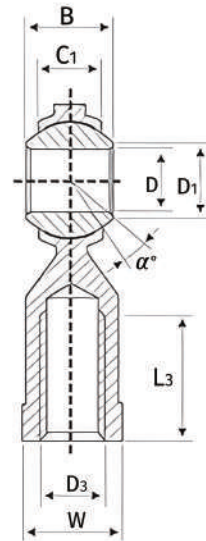
型號 Bearing No.	外形尺寸												基本額定負荷	
	Boundary dimensions												Basic load ratings	
	d	d3	B	C1	L1 min	d2	h	L2	dk	R1Smin	d1	a≈	動負荷 dyn.c(KN)	靜負荷 stat.c(KN)
	mm													
POS5	5	M5*0.8	8	6	20	16	33	41	11.11	0.3	7.7	13	3.25	5.7
POS6	6	M6*1	9	6.75	22	18	36	45	12.7	0.3	8.96	13	4.3	7.2
POS8	8	M8*1.25	12	9	25	22	42	53	15.875	0.3	10.4	14	7.2	11.6
POS10	10	M10*1.5	14	10.5	29	26	48	61	19.05	0.3	12.9	13	10	14.5
POS12	12	M12*1.75	16	12	33	30	54	69	22.225	0.3	15.4	13	13.4	17
POS14	14	M14*2	19	13.5	36	34	60	77	25.4	0.3	16.9	16	17	24
POS16	16	M16*2	21	15	40	38	66	85	28.575	0.3	19.4	15	21.6	28.5
POS18	18	M18*1.5	23	16.5	44	42	72	93	31.75	0.3	21.9	15	26	42.5
POS20	20	M20*1.5	25	18	47	46	78	101	34.925	0.3	24.4	15	31.5	52.5
POS22	22	M22*1.5	28	20	51	50	84	109	38.1	0.3	25.8	15	38	57
POS25	25	M24*2	31	22	57	60	94	124	42.85	0.3	29.6	15	47.5	68
POS28	28	M27*2	35	25	62	66	103	136	47.6	0.3	32.3	15	58	75.5
POS30	30	M30*2	37	25	66	70	110	145	50.8	0.3	34.8	17	64	88



# 桿端關節軸承

# Ball Joint Rod Ends Series

\* NHS



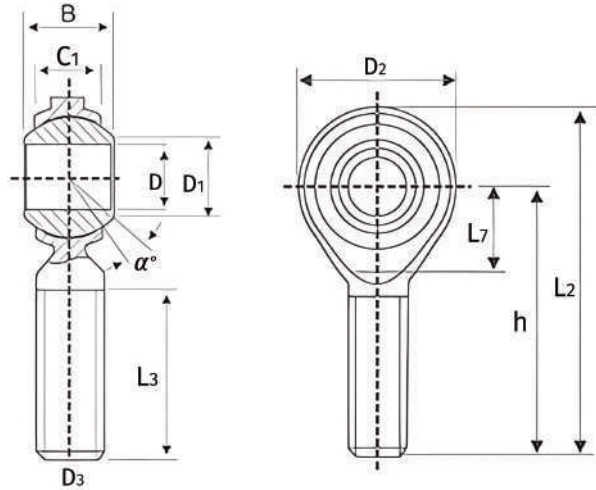
型號 Bearing N	尺寸 Boundary dimensions														基本額定負荷 Basic load ratings	
	d	d3	B	C1	W	h1	d2	L4	L5	d4	d5	Dk	L3 min	α	動負荷 dyn.c(KN)	靜負荷 stat.c(KN)
	mm															
NHS 3	3	M3x0.5	6	4.5	7	21	12	27	3	6.5	8	7.89	10	11	1.7	2
NHS 4	4	M4x0.7	7	5.25	8	24	14	31	4	8	9.5	9.49	12	12	2.5	2.9
NHS 5	5	M5x0.8	8	6	9	27	18	36.5	4	8.5	11	11.11	10	13	5.7	6
NHS 6	6	M6x1.0	9	6.7	11	30	20	40.5	5	10	13	12.7	12	13	7.2	7.65
NHS 8	8	M8x1.25	12	9	14	36	24	48.5	5	12.5	16	15.88	16	14	11.6	12.9
NHS 10	10	M10x1.5	14	11	17	43	28	57.5	6.5	15	19	19.05	20	13	14.5	18
NHS 10-1	10	M10x1.2	14	11	17	43	28	57.5	6.5	15	19	19.05	20	13	14.5	18
NHS 12	12	M12x1.7	16	12	19	50	32	66.5	6.5	17.5	22	22.23	22	13	17	24
NHS 12-1	12	M12x1.2	16	12	19	50	32	66.5	6.5	17.5	22	22.23	22	13	17	24
NHS 14	14	M14x2.0	19	14	22	57	36	75.5	8	20	25	25.4	25	16	24	31
NHS 14-1	14	M14x1.5	19	14	22	57	36	75.5	8	20	25	25.4	25	16	24	31
NHS 16	16	M16x2.0	21	15	24	64	42	85.5	8	22	27	28.58	28	15	28.5	39
NHS 16-1	16	M16x1.5	21	15	24	64	42	85.5	8	22	27	28.58	28	15	28.5	39
NHS 18	18	M18x1.5	23	17	27	71	44	94.5	10	25	31	31.75	32	15	42.5	47.5
NHS 20	20	M20x1.5	25	18	30	77	50	102.5	10	27.5	34	34.93	33	14	42.5	57
NHS 22	22	M22x1.5	28	20	32	84	54	111.5	12	30	38	38.1	37	15	57	68
NHS 25	25	M24x2.0	31	22	36	94	60	124.5	12	33.5	42	42.85	42	15	68	85



## 桿端關節軸承

## Ball Joint Rod Ends Series

\* NOS



型號 Bearing N	尺寸 Boundary dimensions										基本額定負荷 Basic load ratings	
	d	d3	B	C1	h	h2	d2	L3 min	$\alpha$	動負荷 dyn.c(KN)	靜負荷 stat.c(KN)	
	mm											
NOS 3	3	M3x0.5	6	4.9	27	33	12	15	11	1.7	2	
NOS 4	4	M4x0.7	7	5.25	30	37	14	17	12	2.5	2.9	
NOS 5	5	M5x0.8	8	6	33	42.5	18	20	13	5.7	6	
NOS 6	6	M6x1.0	9	6.7	36	46.5	20	22	13	7.2	7.65	
NOS 8	8	M8x1.25	12	9	42	54.5	24	25	14	11.6	12.9	
NOS 10	10	M10x1.5	14	11	48	62.5	28	29	13	14.5	18	
NOS 12	12	M12x1.75	16	12	54	70.5	32	33	13	17	24	
NOS 14	14	M14x2.0	19	14	60	78.5	36	36	16	24	31	
NOS 16	16	M16x2.0	21	15	66	87.5	42	40	15	28.5	39	
NOS 18	18	M18x1.5	23	17	72	95.5	44	44	15	42.5	47.5	
NOS 20	20	M20x1.5	25	18	78	103.5	50	47	14	42.5	57	
NOS 22	22	M22x1.5	28	20	84	111.5	54	50	15	57	68	
NOS 25	25	M24x2.0	31	22	94	124.5	60	57	15	68	85	

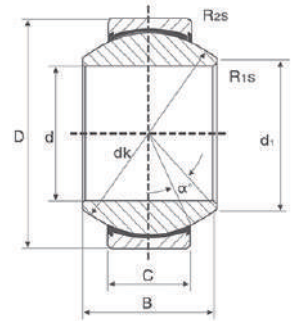




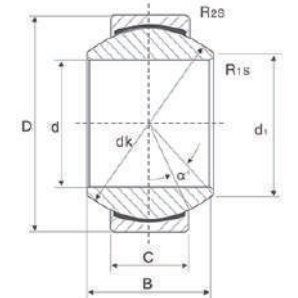
# 向心關節軸承

# Spherical Plain Radial Bearing Series

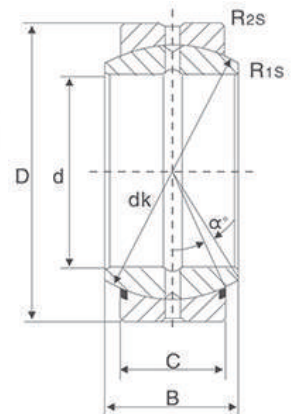
型號 Bearing N	尺寸 Boundary dimensions									基本額定負荷 Basic load ratings	
	d	D	B	C	d1 min	dk	R1s min	R2s min	$\alpha$	動負荷 dyn.c(KN)	靜負荷 stat.c(KN)
	mm										
GE15ET 2RS	15	26	12	9	18	22	0.3	0.3	9	26	52
GE17ET 2RS	17	30	14	10	20	25	0.3	0.3	10	30	60
GE20ET 2RS	20	35	16	12	24	29	0.3	0.3	9	42	83
GE25ET 2RS	25	42	20	16	29	35.5	0.6	0.6	7	68	137
GE30ET 2RS	30	47	22	18	34	40.7	0.6	0.6	6	88	176
GE35ET 2RS	35	55	25	20	39	47	0.6	1	6	112	224
GE40ET 2RS	40	62	28	22	45	53	0.6	1	7	140	280
GE45ET 2RS	45	68	32	25	50	60	0.6	1	7	180	360
GE50ET 2RS	50	75	35	28	55	66	0.6	1	6	220	440
GE60ET 2RS	60	90	44	36	66	74	1	1	6	345	695
GE70ET 2RS	70	105	49	40	77	80	1	1	6	440	880
GE80ET 2RS	80	120	55	45	88	92	1	1	6	567	1140
GE90ET 2RS	90	130	60	50	98	105	1	1	5	690	1370
GE100ET 2RS	100	150	70	55	109	115	1	1	7	858	1730
GE110ET 2RS	110	160	70	55	120	130	1	1	6	924	1860



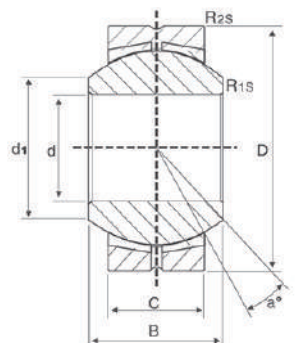
型號 Bearing N	尺寸 Boundary dimensions									基本額定負荷 Basic load ratings	
	d	D	B	C	d1 min	dk	R1s min	R2s min	$\alpha$	動負荷 dyn.c(KN)	靜負荷 stat.c(KN)
	mm										
GE 6 C	6	14	6	4	8	10	0.3	0.3	13	3.6	9.1
GE 8 C	8	16	8	5	10	13	0.3	0.3	15	5.8	14
GE 10 C	10	19	9	6	13	16	0.3	0.3	12	8.6	21
GE 12 C	12	22	10	7	15	18	0.3	0.3	10	11	28
GE 15 C	15	26	12	9	18	22	0.3	0.3	8	18	45
GE 17 C	17	30	14	10	20	25	0.3	0.3	10	22	56
GE 20 C	20	35	16	12	24	29	0.3	0.3	9	31	78
GE 25 C	25	42	20	16	29	35.5	0.6	0.6	7	51	127
GE 30 C	30	47	22	18	34	40.7	0.6	0.6	6	65	166



型號 Bearing No.	尺寸 Boundary dimensions									基本額定負荷 Basic load ratings	
	d	D	B	C	dk	R1s min	R2s min	$\alpha$	動負荷 dyn.c(KN)	靜負荷 stat.c(KN)	
	mm										
GE6E	6	14	6	4	10	0.3	0.3	13	3.4	17	
GE8E	8	16	8	5	13	0.3	0.3	15	5.5	27.5	
GE10E	10	19	9	6	16	0.3	0.3	12	8.15	40.5	
GE12E	12	22	10	7	18	0.3	0.3	11	10.8	54	
GE15ES	GE15ES 2RS	15	26	12	9	22	0.3	0.3	8	17	85
GE16ES	GE16ES 2RS	16	30	14	10	25	0.3	0.3	10	21.2	106
GE17ES	GE17ES 2RS	17	30	14	10	25	0.6	0.3	10	21.2	106
GE20ES	GE20ES 2RS	20	35	16	12	29	0.6	0.6	9	30	146
GE25ES	GE25ES 2RS	25	42	20	16	35.5	0.6	0.6	7	48	240
GE30ES	GE30ES 2RS	30	47	22	18	40.7	0.6	1	6	62	310
GE35ES	GE35ES 2RS	35	55	25	20	47	0.6	1	6	80	400
GE40ES	GE40ES 2RS	40	62	28	22	53	0.6	1	7	100	500
GE45ES	GE45ES 2RS	45	68	32	25	60	0.6	1	7	127	640
GE50ES	GE50ES 2RS	50	75	35	28	66	0.6	1	6	156	780
GE60ES	GE60ES 2RS	60	90	44	36	80	1	1	6	245	1220
GE70ES	GE70ES 2RS	70	105	49	40	92	1	1	6	315	1560
GE80ES	GE80ES 2RS	80	120	55	45	105	1	1	6	400	2000
GE90ES	GE90ES 2RS	90	130	60	50	115	1	1	5	490	2450
GE100ES	GE100ES 2RS	100	150	70	55	130	1	1	7	610	3050
GE110ES	GE110ES 2RS	110	160	70	55	140	1	1	6	655	3250
GE120ES	GE120ES 2RS	120	180	85	70	160	1	1	6	950	4750
GE140ES	GE140ES 2RS	140	210	90	70	180	1	1	7	1080	5400
GE160ES	GE160ES 2RS	160	230	105	80	200	1	1	8	1360	6800



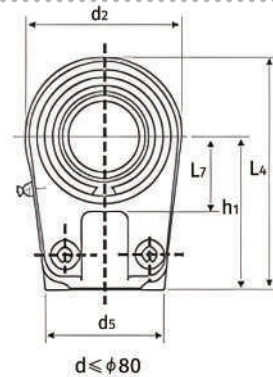
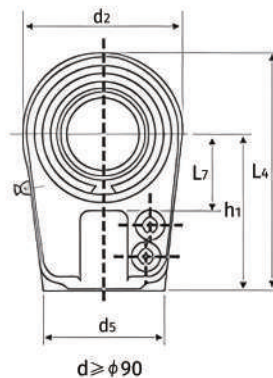
型號 Bearing N	尺寸 Boundary dimensions									基本額定負荷 Basic load ratings	
	d	D	B	C	D min	R1s min	R2s min	$\alpha$	動負荷 dyn.c(KN)	靜負荷 stat.c(KN)	
	mm										
PB 5	5	16	8	6	7.7	0.3	0.3	13	3.3	7.8	
PB 6	6	18	9	6.75	9	0.3	0.3	13	4.3	9.8	
PB 8	8	22	12	9	10.4	0.3	0.3	14	6.8	16	
PB 10	10	26	14	10.5	12.9	0.3	0.6	14	10	23	
PB 12	12	30	16	12	15.4	0.3	0.6	13	13	31	
PB 14	14	34	19	13.5	16.9	0.3	0.6	16	17	40	
PB 16	16	38	21	15	19.4	0.3	0.6	15	21	50	
PB 18	18	42	23	16.5	21.9	0.3	0.6	15	26	61	
PB 20	20	46	25	18	24.4	0.3	0.6	15	31	73	
PB 22	22	50	28	20	25.8	0.3	0.6	15	38	88	
PB 25	25	56	31	22	29.6	0.6	0.6	15	47	110	
PB 28	28	62	35	25	32.3	0.6	0.6	15	59	138	
PB 30	30	66	37	25	34.8	0.6	0.6	17	63	148	



# 液壓油缸關節軸承

# Hydraulic Cylinder Rod End Bearing

\* GIHR...DO



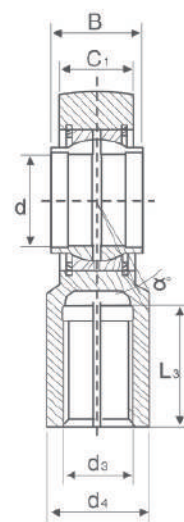
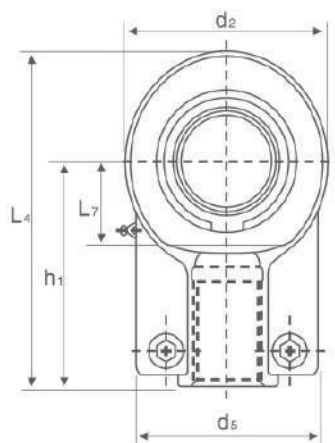
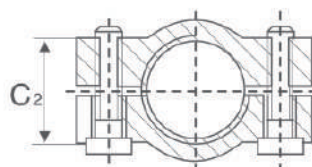
型號 Bearing N	尺寸 Boundary dimensions															基本額定負荷 Basic load ratings	
	d	d3	C1	B	d2	d4	L3 min	dk	d1	L7 min	h1	L4	d5	α	動負荷 dyn.c(KN)	靜負荷 stat.c(KN)	
	mm																
GIHR-K 20 DO	20	M16*1.5	19	16	56	25	17	29	24.2	25	50	80	46	9	30	72	
GIHR-K 25 DO	25	M16*1.5	23	20	56	25	17	35.5	29.3	28	50	80	46	7	48	72	
GIHR-K 30 DO	30	M22*1.5	28	22	64	32	23	40.7	34.2	30	60	94	50	6	62	106	
GIHR-K 35 DO	35	M28*1.5	30	25	78	40	29	47	39.8	38	70	112	66	6	80	153	
GIHR-K 40 DO	40	M35*1.5	35	28	94	49	36	53	45	45	85	135	76	7	100	250	
GIHR-K 50 DO	50	M45*1.5	40	35	116	61	46	66	55.9	55	105	168	90	6	156	365	
GIHR-K 60 DO	60	M58*1.5	50	44	130	75	59	80	66.8	65	130	200	120	6	245	400	
GIHR-K 70 DO	70	M65*1.5	55	49	154	86	66	92	77.9	75	150	237	130	6	315	540	
GIHR-K 80 DO	80	M80*2.0	60	55	176	105	81	105	89.4	80	170	265	160	6	400	670	
GIHR-K 90 DO	90	M100*1.5	65	60	206	124	101	115	98.1	90	210	323	180	5	490	980	
GIHR-K 100 DO	100	M110*1.5	70	70	230	138	111	130	109.5	105	235	360	200	7	610	1120	
GIHR-K 110 DO	110	M120*1.5	80	70	265	152	125	140	121.2	115	265	407.5	220	6	655	1700	
GIHR-K 120 DO	120	M130*1.5	90	85	340	172	135	160	135.5	140	310	490	257	6	950	2900	



# 液壓油缸關節軸承

# Hydraulic Cylinder Rod End Bearing

\* GIHN-K...LO

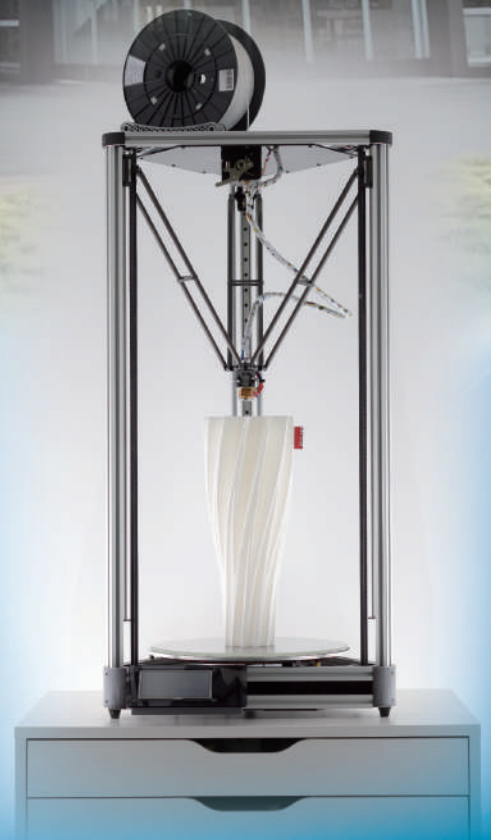


型號 Bearing N	尺寸 Boundary dimensions												基本額定負荷 Basic load ratings	
	d	B	C1	d 3 6g	d4	L3 min	d2	L4	h1	L7 min	C2	d5	動負荷 dyn.c(KN)	靜負荷 stat.c(KN)
	mm													
GIHN-K 12LO*	12	12	11	M12*1.2	16.5	17	32	54	38	14	11	32	10.8	24.5
GIHN-K 16LO	16	16	14	M14*1.5	21	19	40	64	44	18	14	40	17.6	36.5
GIHN-K 20LO	20	20	17	M16*1.5	25	23	47	77	52	22	17	47	30	48
GIHN-K 25LO	25	25	22	M20*1.5	30	29	58	96	65	27	19	54	48	78
GIHN-K 32LO	32	32	28	M27*2.0	38	37	71	118.5	80	32	22	66	67	114
GIHN-K 40LO	40	40	33	M33*2.0	47	46	90	146	97	41	26	80	100	204
GIHN-K 50LO	50	50	41	M42*2.0	58	57	109	179.5	120	50	32	96	156	310
GIHN-K 63LO	63	63	53	M48*2.0	70	64	136	213	140	62	38	114	255	430
GIHN-K 70LO	70	70	57	M56*2.0	80	76	155	245	160	70	42	135	315	540
GIHN-K 80LO	80	80	66	M64*3.0	90	86	168	270	180	78	48	148	400	695
GIHN-K 90LO	90	90	72	M72*3.0	100	91	185	296	195	85	52	160	490	750
GIHN-K 100LO	100	100	84	M80*3.0	110	96	210	322	210	98	62	178	610	1060
GIHN-K 110LO	110	110	88	M90*3.0	125	106	235	364	235	105	62	190	655	1200
GIHN-K 125LO	125	125	102	M100*3.0	135	113	260	405	260	120	72	200	950	1430





# 永興軸承



**TTN<sup>®</sup> BEARINGS**  
永興軸承·安心運轉

**SINCE1976 TAIWAN**  
**台灣** 永興軸承有限公司

YOUNG SING BALL BEARING CO., LTD.  
新北市新莊區頭前路28號  
No.28, Touqian Rd., Xinzhuang Dist.,  
New Taipei City 242 Taiwan  
電話：+886 2 8992 7722  
傳真：+886 2 2277 4971  
電郵：sales@ttn-bearing.com.tw

**SINCE2006 KUNSHAN**  
**昆山** 昆山義榮軸承製造有限公司

KUNSHAN YI RONG BEARING MANUFACTURING CO.,LTD  
江蘇省崑山市淀山湖鎮北苑路9號  
No.9, Beiyuan Rd., Dianshanlake Town, Kunshan City,  
Jiangsu Province 215345 China  
電話：+86 512 57896655 / 57890066  
傳真：+86 512 57891010  
電郵：ttn@ttn-bearing.com / long@ttn-bearing.com